

mini
Multiform motitlum



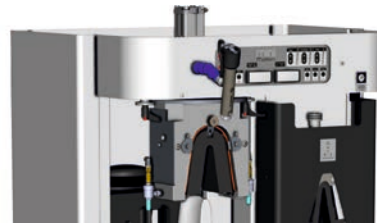
Technical Data

OPERATION	Electro-Pneumatic
PRESSURE	6 Bar
CAPACITY	1200 pairs per 8 hours max.
VOLTAGE	230V single phase 60Hz
POWER CONSUMPTION	1500 W
DIMENSIONS (mm)	905 X 938 X 1965
WEIGHT	330Kgs



VERSATILE BACKPART MOULDING MACHINE WITH ONE HOT & ONE COLD STATION

All the great features and flexibility (5 operations in one machine) of Multiform 4 in a compact size and value, ideal even for small productions and not only...



1 Hot - 1 Cold Station
With Wipers (Flanging)



Thermoplastic flanging



1 Hot - 1 Cold Station
With Airbag (no Flanging)



Thermoplastic

